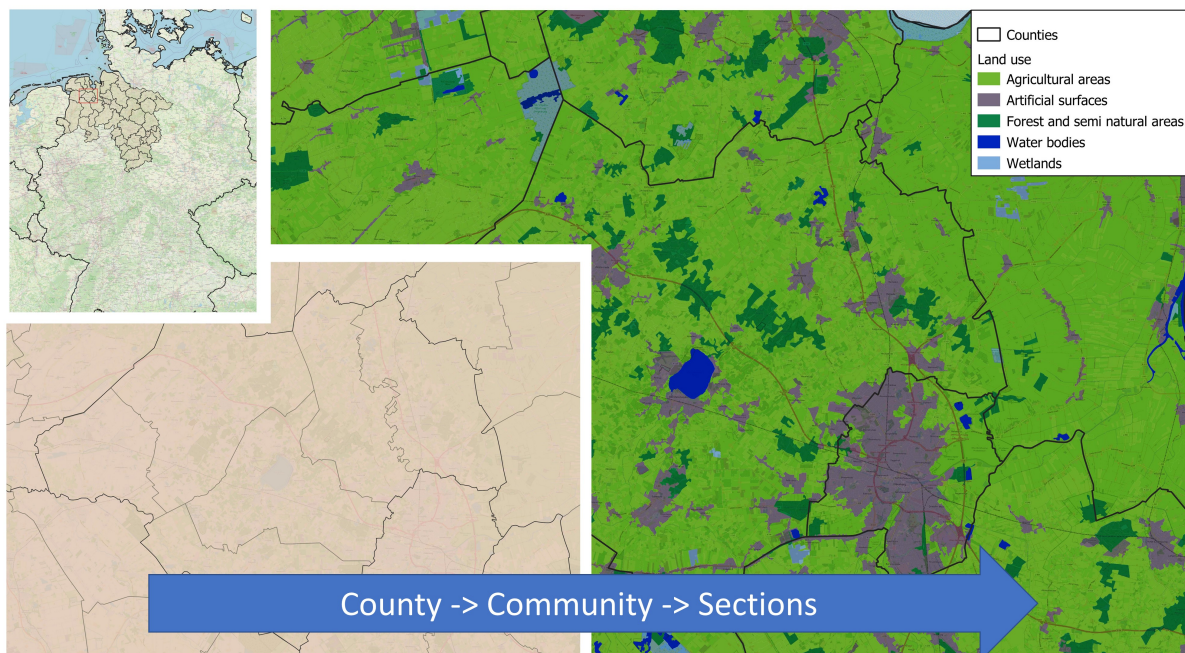




Product factsheet

Regional demand-supply matching GIS tool

Consulting or service offering (e.g. training)
Methodology or process



Description

Systematic visualisation and merging of open-source data (water demand and water sources). Identification of water sources by locations.

The Regional Demand-Supply Matching Tool is a GIS tool for visualising and processing open source information on natural water availability and sectoral consumption. The information can be used to identify i) possible consumption focal points and areas of water scarcity, ii) alternative water resources or areas with available water sources, and iii) water transfer from one region to another. Based on the analysis, the impact of alternative water availability scenarios on water demand can be presented.

Target audience

Water suppliers, public.

Actors, their roles and interactions

Water utilities: indicate the need of data management.

Unique selling points

- Automatic identification of suitable (alternative) water sources.
- Visualization of hotspots in water demand and scenarios of water saving.

Technical requirements

QGIS environment necessary.

Publications

Schwesig et al. (2023): Digitale Lösungen für eine wasserbewusste Gesellschaft, Energie|Wasser-Praxis, 6+7/2023, pp. 54-59. https://energie-wasser-praxis.de/wp-content/uploads/2023/06/2023_06_06_FB-Schwesig_0607_2023.pdf

Technology applied by the product

- [Water recovery technologies for water reuse](#)

Costs

Open source. Costs may relate to a further regionalized study. The amount of costs refers to the scope of the analysis, and work expense e.g., integration of non-commercial data and data evaluation.

Case Study applying the product

East Frisia, Germany



<https://mp.watereurope.eu/d/CaseStudy/19>

Related tags

Water resources

Residential

Water demand

Industrial

Agricultural

Downloads

The following files can be downloaded from the online page of the product:
<https://mp.watereurope.eu/d/product/35>

- [Read_me](#)
- [data_package_1](#)
Demo data package 1 - mandatory data
- [data_package_2](#)
Demo data package 2 - optional data
- [RDSMG v1.2](#)
- [User manual RDSMG v1.2](#)
- [Training material of the tool](#)