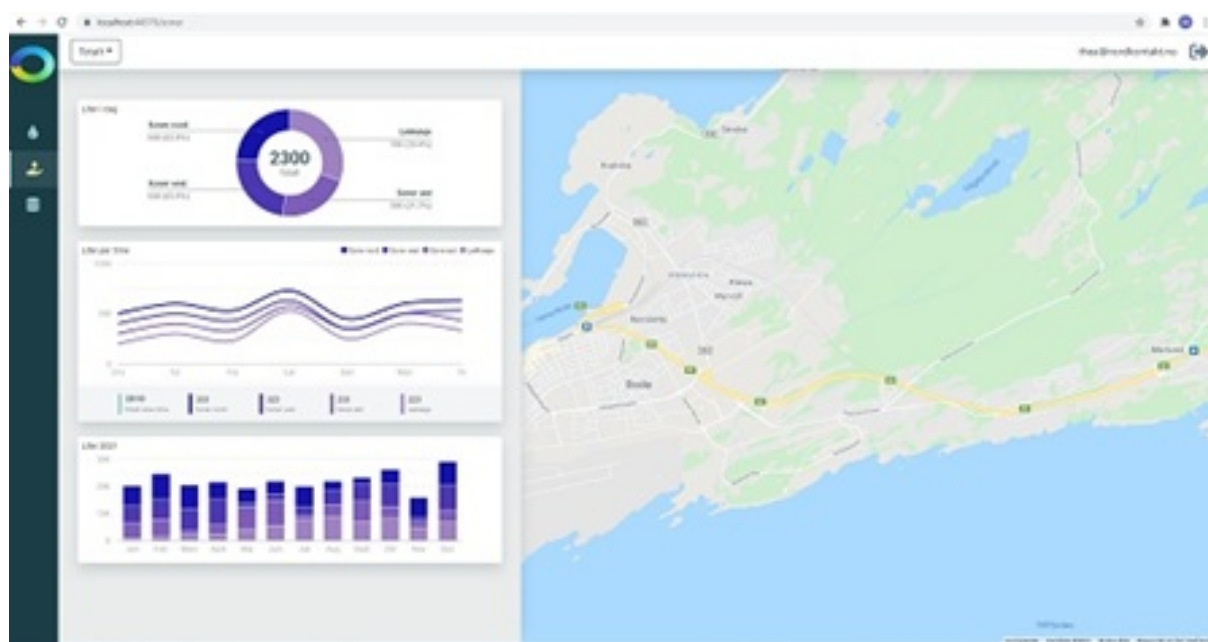




## Product factsheet

# Miljødashboard - Environmental Dashboard

Software solution



## Description

The Environmental Dashboard is suitable for visualizing different data sources, and with different levels of detail. Apart from the water domain, the Environmental Dashboard is also used for traffic mapping and water management (as part of other projects).

### Target audience

It is being developed with three user groups in mind. 1st technical staff, 2nd administration, 3rd audience.

## Actors, their roles and interactions

Water utilities, industries, technology providers, end-users, their roles and their interactions.

## Technical requirements

Ordinary PC, tablets or any smart phone.

## Software data

- Version: 2.0
- Initial release: 2023
- License type: Commercial

## URL

<https://www.miljodashboard.no/>

## Technology applied by the product

- Resource for Circular Economy

## Costs

The product is not fully developed, and not priced. In the future, we will also work with a business model that takes care of the product's living costs.

## Technology Readiness Level

Level 2

## Case Study applying the product

### Bodø, Norway



<https://mp.watereurope.eu/d/CaseStudy/34>

## Related tags

water

environment

power

waste

air quality

traffic

## Downloads

The following file can be downloaded from the online page of the product: <https://mp.watereurope.eu/d/product/65>

- [Training material of the tool](#)